



*The UK's bespoke Four Poster Bed specialist*  
[www.beaudekert.co.uk](http://www.beaudekert.co.uk)





*Going to bed at night saying we've done something wonderful, that's what matters to me.*

Steve Jobs (1955-2011)





*Nothing is more difficult, and therefore more precious, than to be able to decide.*

Napoleon Bonaparte (1769-1821)

For over 25 years Beaudesert has been hand crafting bespoke Four Poster Beds, made to order in the UK to any style. Like a Savile Row suit or an haute couture dress, each bespoke bed we build is beautifully crafted to suit the individual needs of the client. When anything is possible, the only limit is your imagination.

#### **COLONIAL**

The colonial is an open design, without a canopy, the emphasis being on the four posts which are often carved with attractive finials.

#### **LIT A LA POLONAISE**

In 18th century France, designs involving swagged fabric were *à la Polonoise*, meaning in the Polish style. Swooping drapes are gathered up on hidden side arms from the central pleated domed canopy to form a romantic and elegant tented bed.

#### **HALF-TESTER**

The Half Tester is a short canopy over the head of the bed, attached to posts or the wall, making a statement without the enclosing effect of full bed curtains.

#### **CORONA**

Decorative curved coronas attach to the wall or ceiling, so curtains can be swagged and gathered over the head or middle of the bed.









*It is the quality of our work which will  
please God and not the quantity.*

Mahatma Ghandi (1869-1948)



#### FOUR-POSTER

There are many stylistic options, but the principle of the classic Four Poster is that it has a full canopy, or tester, over the entire bed. The differences lie in the detail, not just of the posts, but also the canopy and style of bed dressings. There are numerous variations, including:

- **TURNED POSTS**

Posts are turned by hand from a single piece of fine wood on a lathe. They offer a simple, clean-lined look, which are stained and polished or painted.

- **CARVED POSTS**

Turned posts can also be carved to create a more ornate interpretation. They can then be stained and polished, have a specialist paint finish applied, or be gilded.

- **SHAPED CANOPIES & CORNICES**

Serpentine pelmets, arched canopies, deep moulded wooden cornices, stiff fabric covered pelmets or any other style canopy or cornice can be made to order.


- **SWING ARM LAMPS**

Where side curtains make external bedside lighting less effective, swing arm lamps can be neatly attached to the square back posts to light the internal space.





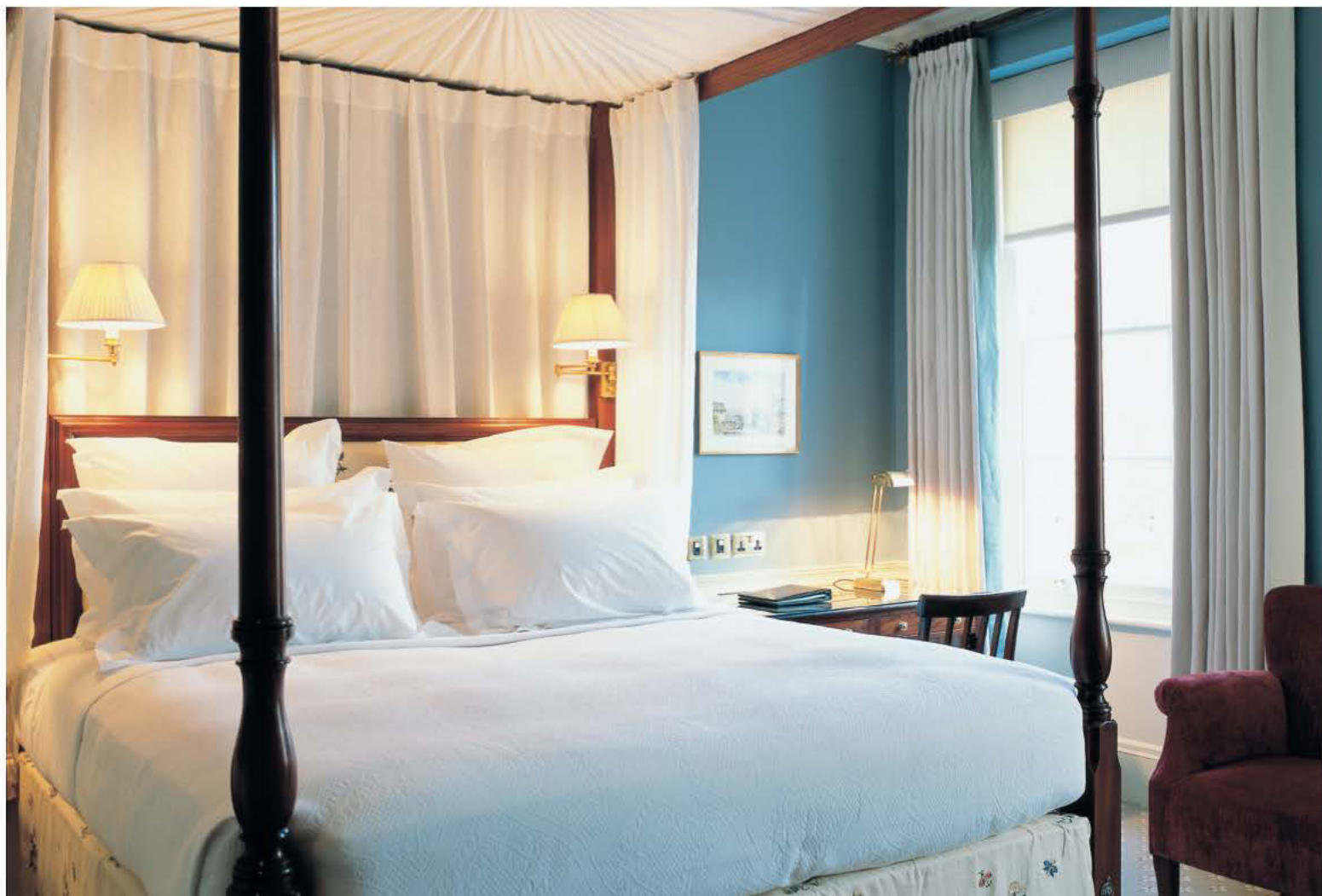




Beadesert beds are not simply 'finished' in the UK, they are entirely hand-made using traditional principles employed since the 18th Century.

As bed makers, rather than suppliers, we have an experienced team of highly skilled carvers, joiners, hand-polishers, upholsterers, mattress and curtain makers that attend to every detail of a bed's construction.



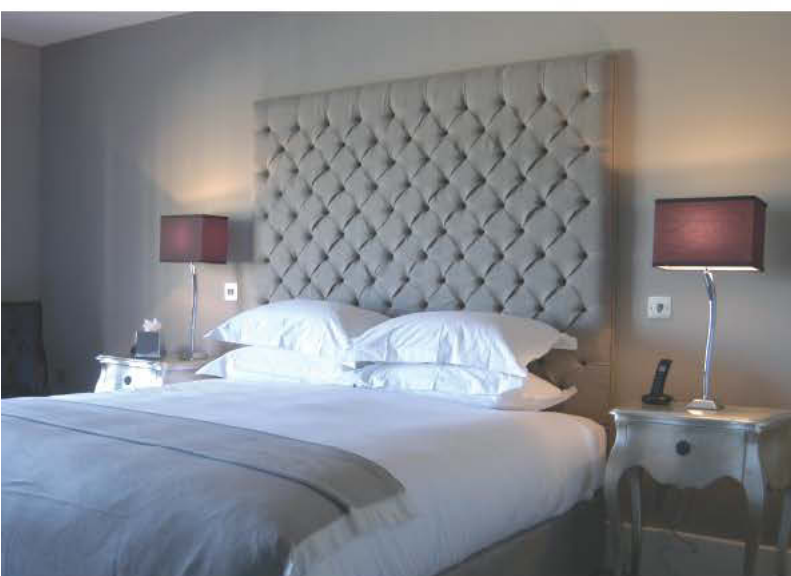






*Simplicity and repose are the qualities that measure  
the true value of any work of art.*

Frank Lloyd Wright (1867-1959)



#### **DIVANS & BED BASES**

Recognising that a simpler solution may be needed for other guest rooms we also offer high quality divan beds, including twins that can be linked to form doubles, and single beds.

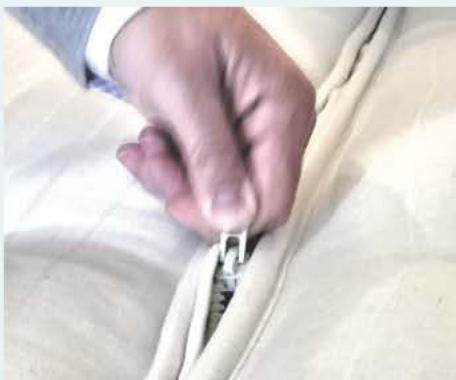
The bed bases can be tight covered, include drawers for additional storage, or have a valance. Divans and bases are made to order, so we can accommodate any size or special requirements that may be necessary.

#### **BESPOKE HEADBOARDS**

Our craftsmen are also able to create headboards to any size or shape, whether upholstered, entirely made in polished wood, carved, painted, or even gilded. They may include detailed space-nailing, deep-buttoning, or other upholstery techniques.

Being entirely made to order we can create virtually any shape, including freeform designs. Oversized designs are also extremely popular.





### NATURAL FILLINGS

Our own pocket sprung mattresses are hand made to the highest specification using the finest grade all-natural fillings. These include:

**Hand teased, long stranded, curled white hair** – a highly resilient and durable natural filling which inherently recovers its original shape, creating a breathable, even and luxurious filling.

**Cotton & wool felt** – superior quality white cotton felt is layered within the mattress, creating much of the bulk. Wool felt is also used in this way and compression packed into the mattress borders prior to side stitching.

**Pure combed new lamb's wool** – lamb's wool is naturally soft yet supportive and it creates an additional top layer of comfort.

**Quality detailing** – 100% cotton ticking covers the mattress, tufted with luxurious wool tufts. Chrome or brass vents are integral to the three rows of hand side stitching. Two useful carry handles per side are also securely attached.

**Sprung units** – each pocket sprung mattress has around 2,000 individual tiny steel springs in natural calico pockets, hand stitched together to form a dense honeycomb, to ensure the ultimate in support and comfort.

### DEGREE OF FIRMNESS

A person's weight will partly dictate the mattress suitability:

**Soft mattress** – 12st / 76kg

**Medium mattress** – 12-16st / 76-101kg

**Firm mattress** – 16st +/- 101kg +

Whilst a change to the number of springs can affect the firmness of a mattress there are also other ways to alter this, such as adding a layer of cashmere to the top of the mattress fillings.

The full benefits of our mattresses can only be achieved if the correct support is used in the bed base. We supply a sprung divan base with all our pocket-spring mattresses which have a traditional solid wood frame with the coil spring unit interlaced with hessian webbing.

### MADE TO ANY SIZE

Our mattresses are hand made to any size and entirely to order. They are often made in two halves, which zip and link together, which also gives the option of combining mattresses of different firmness.

The preferred and traditional way to make a mattress fit the Four Poster Bed frame is to cut out the two corners of the mattress and bed base at the foot end to accommodate the posts.

**Standard Queen Size** – 152cm / 5'0" wide

**Standard King Size** – 180cm / 6' wide

**Standard Emperor Size** – 200cm / 6'6" wide

The floor to the top of the mattress height on a Four Poster Bed is usually 28"/71cm, which is higher than most divan beds.

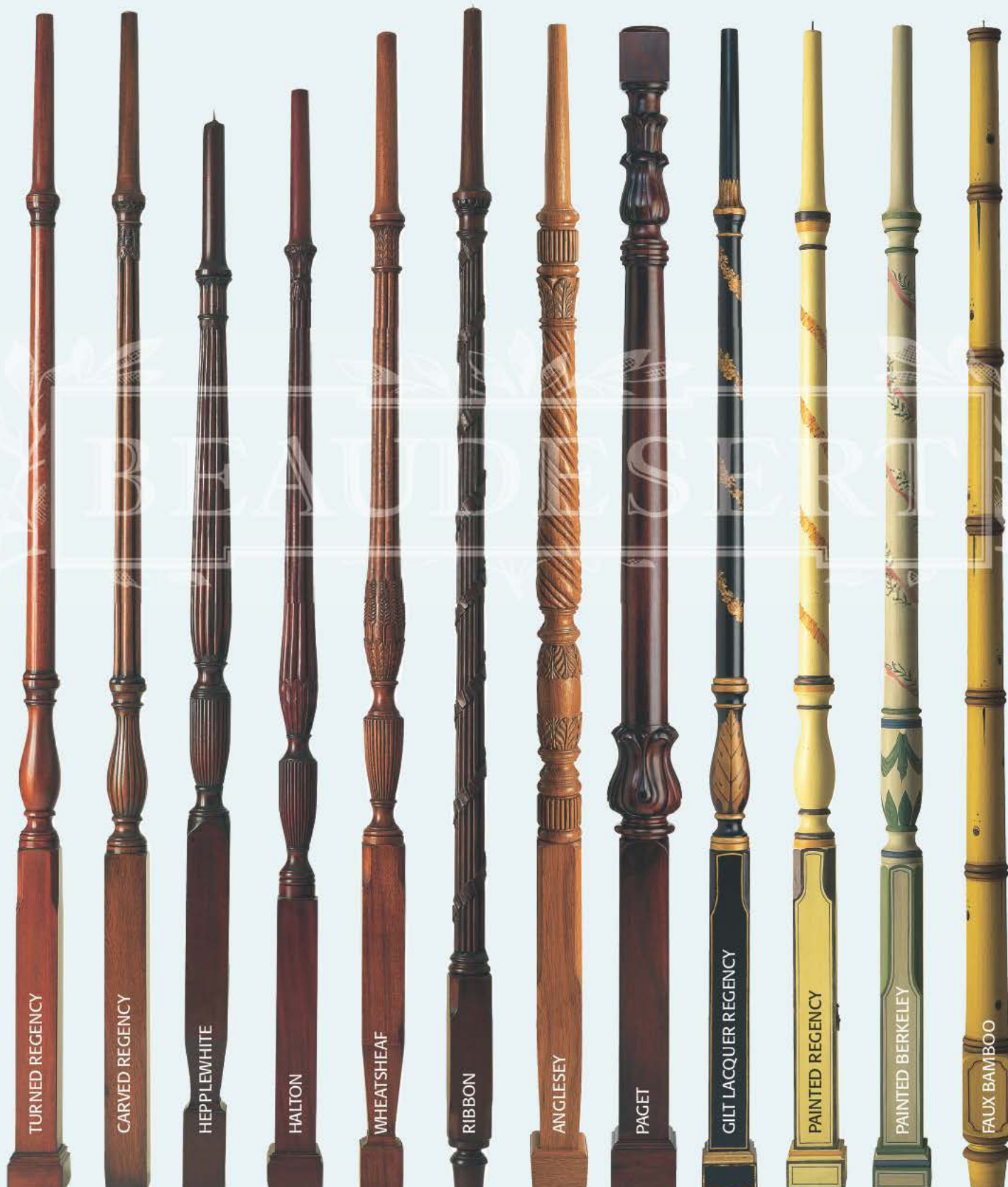
We can also build the Four Poster Bed frame around an existing divan bed base and mattress if required, or work with mattresses from other suppliers.

### 10 YEAR GUARANTEE

Every mattress we make carries a 10-year replacement guarantee, no matter where its destination across the world. (Terms & conditions apply)

Further useful information on mattress selection and purchase can be found online at [www.sleepcouncil.com](http://www.sleepcouncil.com)



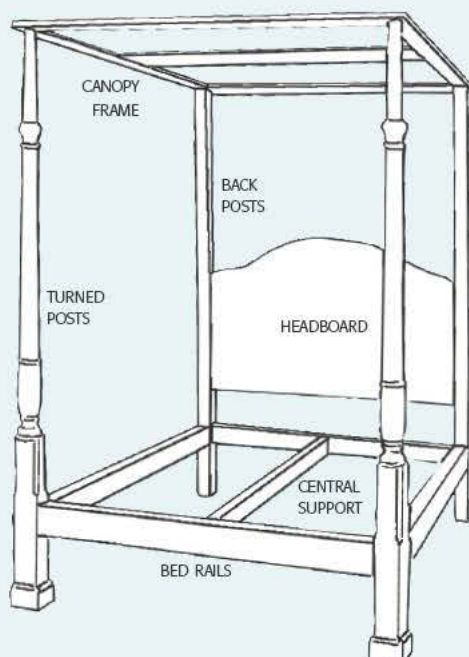


#### BED POST STYLES

Beau Desert post styles are faithful reproductions of classic 18th and 19th Century original designs. Each design can be adapted to suit any height of bed and supplied turned but uncarved for a more contemporary interpretation. Elements of any post style can be altered or combined with others, or new styles designed to order.

Existing antique beds and posts can also be fully refurbished and adjusted, or have new bed frames made for them.





### CHOICE OF WOODS

Beaudebert sources wood only from farmed sustainable woodlands, fully in line with FSC guidelines.

**Mahogany** – The traditional hardwood used for quality European furniture for centuries. Brazilian mahogany is imported in small quantities and is chosen for its crisp carving suitability.

**Utile** – Pronounced 'you-tilly', this is a West African mahogany species. Harder than Brazilian mahogany, it is selected for its superb finish when turned, but considered too hard for carving.

**Tulipwood** – Coming from the east coast of North America, this lightweight wood is also very strong with a very smooth finish. We use this only for painted finish posts.

**White Oak** – One of the pre-eminent hardwoods of eastern North America it is strong, tough and fine-grained. Posts are stained and polished to show the wood grain's natural beauty.

**Walnut** – American Walnut is used for its durability, lustre and fine figuring in the grain, finished with stain and polish.

### ALTERNATIVE FRAME OPTIONS

Some designs require frames which are made from materials other than wood, such as the curving metal arms for a Lit à la Polonoise.

Some bed posts may simply require a different finish to wood, but be based on a wooden frame construction. For instance, posts may be entirely wrapped in fabric, covered in leather or have panels of etched venetian mirror applied to them.

We are able to create most alternative designs, though as they are more specialised, these may take longer than a standard wooden bed frame to manufacture.

### BESPOKE HAND CARVING

Our extremely skilled wood carvers are able to create virtually any sort of design, so can accommodate coats of arms, monograms, floral motifs, geometric friezes or any other decoration that may be requested by a client.

Carving is not only possible on the bed posts; cornices, coronas, headboards and footboards can also be carved, as appropriate to the bed's individual design requirements.

### WHAT SIZE BED?

There is no set standard height for a four poster bed, but a good average for a 6'/180cm wide bed would be between 8'/245cm and 9'/275cm high, depending on the available ceiling height. Lower beds tend to suit narrower widths, but it is important to try to visually maintain that the bed is taller than it is wide.

### STANDARD BED FRAME

A standard Four Poster Bed frame would normally consist of:

- 2 square, unpolished back posts;**
- 2 turned and/or carved French polished posts;**
- 4 polished mahogany bed rails**
- 1 polished mahogany central support rail**
- 1 unpolished canopy frame**

Mattresses, bespoke finishing options, internal lighting, any other bespoke requirements and installation are all priced individually for each individual bed project.





### SPECIALIST PAINT FINISHES

Our specialist painters offer a variety of beautiful finishing options, including oil or water gilding, ebonising, antiqued limed or dragged finishes and decorative hand painting.

Popular hand painted designs include scrolling or spray floral motifs either in paint or black and gold lacquer, scattered butterflies, flowing ribbons and faux bamboo finishes.

### DRESSINGS

The way a bed is dressed changes its look completely and there are many options to consider. Pelmets can be gathered, pleated or straight, trimmed or untrimmed, have corner bells, crowns and rope, or be flat and shaped with contrast bindings or braids. There are also smocked headings, swags, layered pelmets – the options are infinite and our workrooms are experienced in every possibility.

All curtain dressings we make, according to their inclusion in the overall design, will have hand-made headings, come fully Domette interlined and will have hand-sewn trimmings. Base valances are similarly hand sewn and finished.

### TERMS

Upon the client's written acceptance of the scaled design sketch and our detailed estimate, we require a 50% deposit to commence work. The remainder is due upon completion, which will be prior to installation.

It usually takes between 10-12 weeks to hand build your individual bespoke Four Poster Bed, one which will be enjoyed for a lifetime.

### INSTALLATION

Our installation team are very experienced and entirely assemble and dress each bed on site. Canopies can be hinged to ensure access through low doors, narrow passages or tight staircases. We are happy to quote for installations abroad.

### WHERE TO TRY

We have a Four Poster Bed on display in our showroom which clients can come to view and experience the mattress. We also have beds in the following hotels:

*The Dorchester Park Lane, Mayfair, London W1K 1QA*

*The Cranley Hotel 10 Bina Gardens, London SW5 0LA*

*The Royal Park Hotel 3-5 Westbourne Terrace, London W2 3UL*

*The Vineyard Hotel Stockcross, Newbury, Berkshire RG20 8JU*

*The Lamb at Hindon High Street, Hindon, Wiltshire SP3 6DP*

*Hotel Grosvenor High Street, Shaftesbury, Dorset SP7 8JA*





*Front Cover: courtesy Todhunter Earle Design*

*Pages 2-3: courtesy John McCall Ltd © Niall Clutton*

*Page 4, bed interior: courtesy Emma Sims-Hilditch*

*Page 5, colonial bed: courtesy Mark Gillette Interior Design*

*Page 6, main bed: by Joanna Wood, from The English Home*

*Page 8: courtesy Colin Orchard & Company*

*Page 9, top: courtesy The Royal Park Hotel, London*

*Page 9, below left: courtesy Mark Gillette Interior Design*

*Page 10: courtesy Hotel Grosvenor, Shaftesbury, Dorset*

*Back Cover: courtesy Emma Sims-Hilditch*

*All other images © Beaudesert 2012,  
with grateful thanks to our clients*





The Old House  
The Square, Tisbury  
Wiltshire SP3 6JP

showroom@beaudesert.co.uk  
Tel +44 (0)845 838 8720  
Fax +44 (0)1747 871016

BEAUDESERT  
LONDON